

ON THE LEVEL



THE CANAL SOCIETY OF NEW JERSEY

12TH ANNUAL WATERLOO CANAL DAY, A GLORIOUS EVENT BY ALL ACCOUNTS!

This past June 30th was truly a remarkable day! Approximately 800 people came to Waterloo to celebrate Canal Day and the Morris Canal heritage of this historic canal town! The weather was exceptional and the Society was very fortunate to have extensive advance publicity, coordinated by Society member Joyce Hussa of Denville. For the first time the New Jersey Division of Parks & Forestry was a co-sponsor of the event, along with the Canal Society. We are extremely honored to have had the Division as a partner! It was a privilege to be able to bring historic interpretation to the public at Waterloo, especially when the village is otherwise closed.

Approximately 50 Canal Society member volunteers were on hand to implement the day's activities. Our mule-drawn boat ride operated most of the day and provided rides to about 150 people. The Canal Society's display depicted New Jersey's historic towpath canals and included a sales table of



(Above) The Canal Society's "Canal Explorer" carries a load of passengers who came to Waterloo Canal Day to experience the Morris Canal.

(Right) On Canal Day, interpreter Richard Pawling and his partner presented period music for the crowd in the performance tent.

canal-related publications. Other exhibits illustrated the historic Sussex Mine Railroad and its successor at Waterloo; a display on the Morris Canal Greenway in Warren County, provided by the



Warren County Morris Canal Committee; and outstanding historic photographs of the village, the Sussex Railroad and the Morris Canal, all shared by a descendant of the Smith family of Waterloo. Craft activities were provided for children, in addition to nineteenth-century games.

Throughout the day Society members offered six guided tours of the historic Morris Canal sites and structures in the village. These tours were very successful and attracted approximately (Continued on page 2)

MEETINGS

Friday – September 21, 2007 at 7:30 p.m. – Refreshments at 7:10

Brownstone Quarrying and the Canals of New Jersey
Morris County Cultural Center – 300 Mendam Road, Morris Township

MARK ZDEPSKI

While visiting Morris Canal and Delaware & Raritan Canal sites we all have admired remnants of historic masonry locks, inclined plane sleepers, plane powerhouse foundations, bridge abutments, waste gates and overflows, many of which are built with wonderful brownstone blocks. But, have you ever wondered where these stones came from, who quarried them and how they were transported to the construction sites? Tonight's speaker will answer these and other questions (Continued on page 2)

WATERLOO CANAL DAY

(Continued from page 1)

100 people. In addition we provided guided walking tours of the exterior of the primary buildings in the village. Members of the Waterloo United Methodist Church offered tours of the church's interior and historical information about the church as an organization. The Canal Society's New Jersey Canal Museum was open all day for the public and was consistently full of interested visitors. Our canal photo exhibit was available in back of the museum and generated interest throughout the day.

This year Waterloo United Methodist

Church provided lunch and snack foods for the public. In the evening the church catered the Canal Society's membership picnic, attended by 52 people. We are very grateful that the church was able to participate and had a successful day!

A major attraction throughout Canal Day was Richard Pawling, with his History Alive! performances. In late morning and late afternoon Pawling and his partner provided period music presentations. In the early afternoon Pawling staged his hour-long, first person interpretation of a canal boat captain. These performances

were held under a tent next to the Smith Store and generated great public interest and participation.

Throughout the day public attendance far exceeded our expectations! Visitors expressed great interest in the village and its Morris Canal features. Strong support for the preservation of the village and its associated historic programming was universal.

We are especially grateful to the Division of Parks & Forestry for its outstanding support! In particular we wish to thank DEP Assistant Commissioner Amy Cradic and Sally Lane of her staff. Both were crucial for their help and coordination, which made Canal Day possible this year. We also wish to acknowledge State Park Superintendent Helen Maurella who was terrific in coordinating logistical details with the Society. Her staff did an outstanding job in having the Waterloo grounds ready and looking well groomed.

Thank you to all of our members who generously volunteered their time to make Waterloo Canal Day a great success! We especially wish to acknowledge Mark Hamill who spent months planning and implementing the events for the day and to Dick Draper and Rod Howarth, who once again overcame numerous obstacles to successfully launch and operate the mule-towed public boat rides on the canal at Waterloo. Finally, we express our gratitude to Harold Kafka who donated his mules for the day to pull our boat on the canal.



Clyde and his owner Harold Kafka were a hit with the Waterloo Canal Day crowd which thoroughly enjoyed the Society's "Canal Explorer" boat ride.

MEETINGS

(Continued from page 1)

as he discusses nineteenth-century brownstone quarries in New Jersey, the various grades of brownstone, how the different types of stone were used in various applications, and historic quarrying techniques.

More than 87 brownstone quarry locations have been identified in New Jersey and numerous additional small quarries have no doubt escaped detection. The bulk of these quarries were worked between 1840-1880 when brownstone was extremely popular for use in urban housing. What we know as brownstone is a Triassic-aged sandstone from the Passaic Formation.

Typical quarrying employed "wedge and feather" techniques to extract large blocks that were then cut and trimmed into small blocks or the final design shapes. Blasting was generally employed under carefully controlled conditions to avoid shattering the valuable rock. Quarried stone was moved in the quarry using "stiff-legged" cranes. Quarried stones were also transported on canal boats since their bulk and weight were more easily manageable on canals than on poor quality roads.

Come and learn about the source material of many of the major structures on our state's canals!

Mark Zdepski is a geologist with JMZ Geology in Flemington, NJ. He was born in Phillipsburg and has spent most of his life in the Garden State. He received his B.S. and M.S. in Geology from the University of Alaska. He worked on the Trans-Alaska Pipeline and after 1976 pursued a career in mineral exploration in Alaska, Montana and Nevada until 1985 when he returned to New Jersey. He has worked in the environmental business ever since, focusing on soils, groundwater and clean water supply. Mark's father was a stone-mason in the Milford and Frenchtown area and his grandfather was a quarryman at Raven Rock, along the Delaware & Raritan Canal Feeder.

(Continued on page 8)

For directions to the Morris County Cultural Center see page 8.



Waterloo's historic stone gristmill has been the focus of state-funded masonry repairs and repointing during the course of this summer

UPDATE ON WATERLOO VILLAGE

REPAIRS AND PLANNING UNDERWAY

During this summer the New Jersey Division of Parks & Forestry has been generally maintaining the grounds at Waterloo, mowing the lawns and making road repairs. Recently several severe storms have toppled approximately a dozen trees at the village. Fortunately none of these trees damaged any of the historic buildings. Prompted by the storm damage the State brought in a forester to examine all of the remaining trees in the village, marking another dozen or so for removal. These designated trees were diseased and/or were far too close to the buildings. The State has removed the fallen trees and most of the other trees that were marked for removal.

A restoration architecture firm has been examining many of the village's buildings, conducting an initial inspection for major structural and roofing issues that require urgent attention. At this time repointing has been underway on the masonry walls of the gristmill. All of the toilets in the restrooms are being replaced since there were extensive plumbing problems. The State has hired John Kraft to refurbish the Lenape exhibit on Indian Island. This work is well advanced and should be complete by fall.

The Canal Society has been stressing that any analysis of the village's historic features should also include all of

the Morris Canal structures, in addition to all of the sites and structures on the Morris County side of the Musconetcong River. Late this summer the State will be issuing requests for proposals from cultural resource firms to develop a historic preservation plan for the entire village and grounds. We have been assured that the canal features will be included in this study. We have pointed out that the canal lock in particular needs attention very soon due to the extensive water leakage through its walls and obvious bulges in its masonry. The wooden trough that carries water from the canal lock to the canal bed behind the Smith Store has been leaking severely and nearing collapse. The state has recently constructed and installed a new trough at the lock. This trough is crucial to maintain water in the section of the Morris Canal extending through the village.

SOCIETY SPONSORING CANAL HERITAGE DAYS

Since Waterloo Canal Day the Canal Society has been sponsoring Canal Heritage Days at Waterloo two Saturdays a month during July and August. These Heritage Days will continue through September and October. During these days the grounds of Waterloo Village are open free of charge. The only building open to the public is the Society's New Jersey Canal Museum. Other offerings include guid-

MORRIS CANAL FEATURED ON THE RADIO!

On Friday evening, August 24 the Morris Canal was the subject of a seven-minute news show on radio station WBGO, 88.3 FM in Newark. This program was part of a new series on Lost Jersey. Recorded guests on the show included Society members Bill Moss and President Brian Morrell. The recorded show can be heard on and downloaded from the radio station's website: <http://www.wbgo.org/events/2007/LostJersey.php>. Also posted on the website are photos of the Morris Canal and a copy of the Morris Canal Greenway brochure. We thank Society Vice President Joe Macasek for providing these images.

ed walking tours of canal sites within the village and an interpreted tour of the exteriors of some of the key historic buildings. Most recently, on August 18 we had the Society's pontoon boat available for motor-powered rides on the canal. The Waterloo United Methodist Church was open for guided tours and the church had lunch and snack foods for sale. It is our hope to add some occasional additional attractions to upcoming Canal Heritage Days. The four Canal Heritage Days that have occurred have attracted a total of 360 people combined. Future Canal Heritage Days will be held from 11 a.m. to 5 p.m. on September 8 and 22 and October 6 and 20. Canal Society volunteers are needed on these days to staff our museum, the village gate, and to lead canal site tours. Members willing to offer their services should contact Art Bird, Museum Guide Coordinator, at 908-903-1468.

Canal Heritage Days are a perfect opportunity to enjoy the picturesque setting of Waterloo Village while helping to bring the Morris Canal to life for the visiting public. We look forward to seeing you there!

WHARTON CANAL DAY 2007

Canal Day visitors disembark from the Society's "Canal Explorer."

Despite the typical sultry August weather, hundreds of people came out to enjoy the various food and trinket vendors at Wharton's Canal Day, held on Saturday, August 25. The Canal Society was present with an exhibit on the Morris and Delaware & Raritan canals and sales items illustrating canal history. This year an additional attraction was an exhibit on the fall 2006 archeological project that occurred at nearby Lock 2 East. On hand were historic views of the lock and photos of the archeological tests that exposed the lock's stonewalls. Some of the artifacts from the lock – hardware from the drop gate's wickets – were also exhibited.

A new addition to Canal Day this year was the Society's "Canal Explorer" boat ride on the wonderfully preserved section of Morris Canal in Hugh Force Park. Approximately 100 people enjoyed gliding along on the canal with Clyde the mule towing the boat. All passengers were provided with interpretation regarding the Morris Canal and its role in our state's 19th-century economy. We especially thank all of the Society volunteers who helped crew the boat. Special acknowledgement goes to Dick Draper and Rod Howarth who



The Canal Society's exhibits and sales items were located in Hugh Force Park's gazebo.

handled the primary boat logistics and to Harold Kafka who provided Clyde the mule for the day.



Clyde the mule was glad he was pulling only tourists, not 70 tons of coal!



The "Canal Explorer" with Wharton Canal Day participants enjoying being able to experience the Morris Canal on an interpretive boat ride.

D&R CANOE TRIP

The Canal Society will sponsor a canoe outing on the D&R Canal on Saturday, September 22. Members of the D&R Canal Watch are being encouraged to join us. The canoeists will travel one way from Princeton to Griggstown. Canoe rentals are about \$35, with an extra \$5 charge for leaving the canoes at Griggstown. For additional information and to register for the event, contact Mark Hamill at 908-561-1250 or e-mail him at hamill-123@comcast.net.

THREE MORRIS CANAL GREENWAY SITES AWARDED \$278,000 IN GRANTS

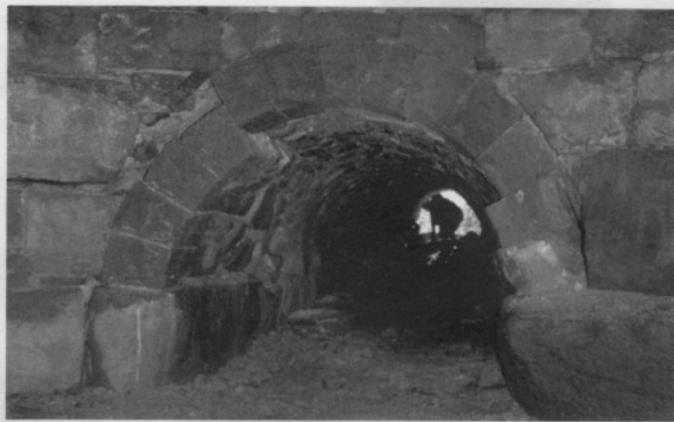
This summer the Morris County Historic Preservation Trust Fund awarded \$2 million in historic preservation grants to 29 projects. Three of these grants went to the following Morris Canal Greenway sites: Plane 2 East in Ledgewood received \$160,000, Lock 2 East in Wharton received \$100,000, and the King Homestead and Canal Store in Ledgewood were awarded \$18,740.

The grant for Plane 2 East in Ledgewood's Morris Canal Park is designated for substantial masonry construction to rebuild and support the tailrace tunnel's stone arch at its junction with the plane's turbine chamber. This plane is one of the four best-preserved planes left from the overall Morris Canal and is a wonderful site for interpreting the inclined plane system. The entrance to the tailrace tunnel is in dire need of repair before it collapses and threatens the integrity of the overall structure. The grant will also pay for some repointing in the turbine chamber, will address public access and safety issues at the ground surface opening of the turbine pit, and will correct surface drainage issues that have been contributing to the deterioration of the plane's subterranean components. It is anticipated that construction work will commence this fall and will continue in the spring.

The Lock 2 East project in Wharton's Hugh Force Park is a continuation of last year's feasibility study to determine whether it would be possible to restore the lock to either a static exhibit or even an operable lock as a major enhancement of the adjacent park. Archeological testing last fall revealed that the now buried lock survives substantially intact, although its uppermost courses of stone were removed and dumped into the lock chamber at the time of the Morris Canal's dismantling. At the same time the surrounding ground surface was graded away, substantially changing the

terrain. The current engineering study will be a topographical and hydrological analysis to determine whether existing sources of water could support an operating lock, the extent of regrading that would be required to recreate the historic landscape at the lock, and environmental permitting and regulation issues that would be associated with a lock restoration project. It is hoped that a recreated canal boat ride on the water-filled section of canal in the park can be a reality in the future. Such a boat ride would be greatly enhanced by an operating, restored lock.

The grant to the King Homestead and Canal Store on Main Street, Ledgewood will support stabilization of a historic stonewall at the rear of the Canal Store. This wall was originally part of the side of a wagon shed. The frame portion of the shed collapsed many years ago, leaving the stonewall free standing and exposed to the ele-



The entrance arch of the tailrace at Plane 2 East is failing and has to be rebuilt.

ments. Masonry repairs and stabilization are necessary to prevent future collapse of the wall.

The King Canal Store was originally built in 1815 and was subsequently operated by Albert Riggs and later by Theodore King. It is a remarkably intact historic Morris Canal store, rivaling Smith's Store at Waterloo Village. Adjacent to the store is the King Homestead, built in 1880. Both buildings are owned by Roxbury Township and are leased and operated as museums by the Roxbury Historic Trust. The Trust has undertaken many years of painstaking restoration work to ensure that these remarkable historic sites are preserved. Both buildings are open to the public on designated weekends during the month.

GREENWAY PRESENTATION PROVIDED AT APPALACHIAN TRAIL CONSERVANCY BIENNIAL MEETING

In mid-July the biennial meeting of the Appalachian Trail Conservancy was hosted by the New York-New Jersey Trail Conference at Ramapo College in Mahwah. Trail enthusiasts from all over the country convened to hike parts of the Appalachian Trail and nearby trails and to visit local and regional attractions. The Canal Society was invited to provide an evening presentation on the Morris Canal Greenway concept and the ongoing initiatives relating to that project. Approximately 100 people attended the Canal Society workshop, which was presented by Society Vice President Joe Macasek. The crowd was very enthusiastic and went home not only with additional

information about the Morris Canal, but brochures on the Morris Canal Greenway and the Canal Society.

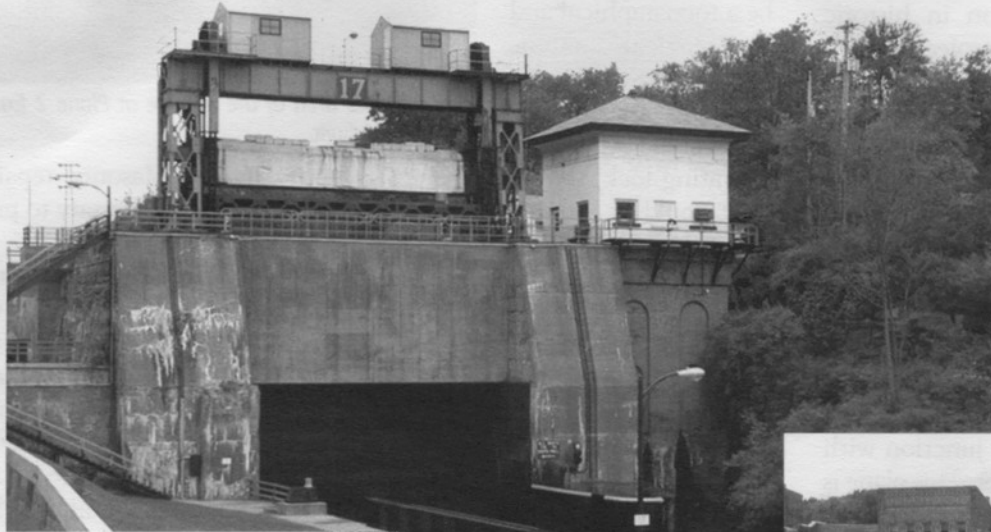
The Appalachian Trail Conservancy is an 80-year-old, volunteer-based, private nonprofit organization dedicated to the conservation of the 2,175-mile Appalachian National Scenic Trail. The conference host, the New York-New Jersey Trail Conference, was formed in 1920 and is a federation of member clubs and individuals dedicated to providing recreational hiking opportunities in the region. The conference participants and the sponsors were an important audience to reach with the Morris Canal Greenway concept.

Last
Chance
to Sign Up!

FALL FOLIAGE TOUR

CANALS IN EASTERN NEW YORK STATE

Friday, October 5, through Monday, October 8



Pictures clockwise from upper left: Lock 17 on the Erie Canal at Little Falls, Lock 4 on the Champlain Canal, Lock 12 on the Champlain Canal at Whitehall, The Half Way House at North-Western along the Black River Canal.



The Canal Society of New Jersey is sponsoring a four-day bus tour of canals in eastern New York State over Columbus Day weekend. This is an opportunity to visit canals of the Empire State in fall color. The price is \$600 per person, based on double occupancy. Most of the meals are included.

To register for this trip, please send a deposit of \$300 to:

Jakob Franke
424 Tappan Road
Northvale, NJ 07647

Please make check payable to
"Canal Society of New Jersey"

If you have any questions, please feel free to call Jakob:

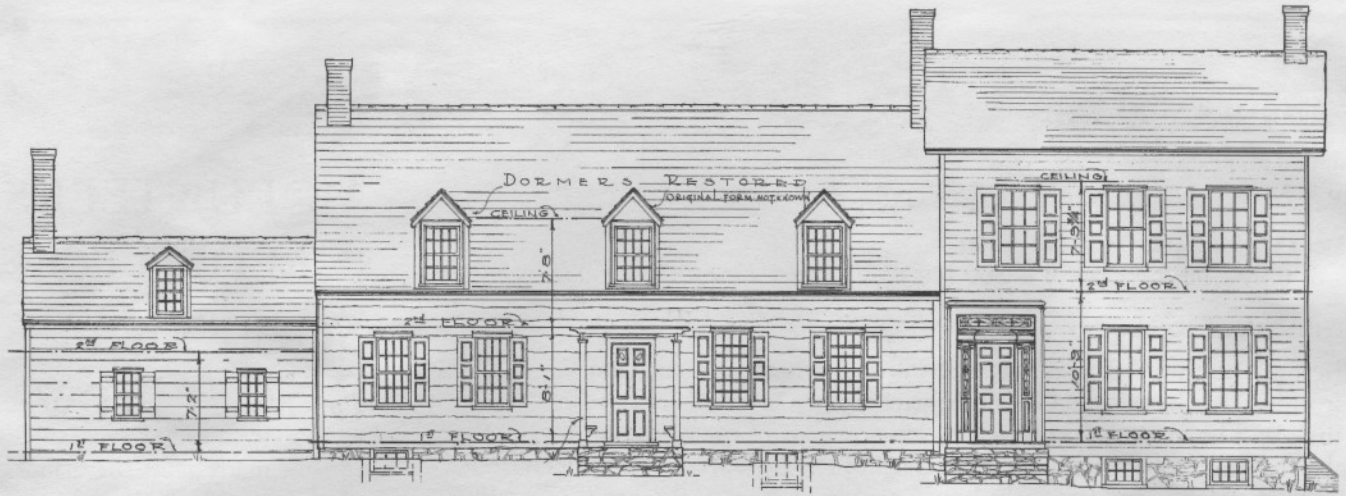
201-768-3612 (Evening)
212-342-0178 (Daytime)
201-638-0582 (Cell)
e-mail: jf31@columbia.edu

Participation requires membership in the CSNJ
(\$25/yr). See Canal Society website:

<http://www.canalsocietynj.org>

TENTATIVE ITINERARY:

- Fri., Oct 5** Depart Mahwah, NJ for D&H outlet lock in Eddyville. Visit the one remaining original powerhouse on Champlain Canal. Boat ride on Champlain Canal, including locking through Glens Falls Feeder. Evening lecture by Glens Falls Feeder Alliance. Overnight in Glens Falls.
- Sat., Oct 6** Visit the flight of five locks in Waterford. See sites along the original Clinton's Ditch. Stop at Lock 17 in Little Falls, the highest lift lock in the NYS canal system. Tentative boat ride on the Erie Canal, weather permitting. Evening lecture by Canal Society of New York. Overnight along Erie Canal.
- Sun., Oct 7** Erie Canal Village in Rome. Follow partial route of Black River Canal – aqueduct, locks, and watered sections. Tentative visit to the Forestport Feeder. Overnight in Rome.
- Mon., Oct 8** Trace route of the Chenango Canal. Visit remnants of the Chenango Canal and a feeder reservoir. Return to Mahwah, NJ.



CANAL DAYS AT THE ABRAHAM STAATS HOUSE

Saturday, September 8 and Sunday, September 9, 2007
 10:00 a.m. – 4:00 p.m. both days
 17 von Steuben La., South Bound Brook

Enjoy a Civil War-era weekend at the historic Abraham Staats House, built c.1740 and located along the banks of the Delaware & Raritan Canal. Exhibits will feature the Canal Society's display on New Jersey's canals and our sales table, living history presentations and special guest speakers. Tours of the Staats House and its collection will be available throughout the event for a nominal fee. Canal Days

is hosted by the South Bound Brook Historic Preservation Advisory Commission and the Friends of the Abraham Staats House, Inc. Admission to the grounds and parking are free.

The Staats House is a remarkable structure which was used as the headquarters of General von Steuben during the 1779 second Millbrook encampment of the Revolutionary War. The house has been described as one of the finest surviving buildings from the 18th-century Dutch settlement of the Raritan Valley. Come and celebrate a great heritage along the Delaware & Raritan Canal!

MEMBERSHIP RENEWAL TIME IS HERE!

As you can see from this newsletter many exciting things are happening in the Canal Society. However, every organization relies heavily on the support of its members to make it possible to undertake its many activities and projects. We ask you to show your support by promptly renewing your membership and if at all possible increasing your dues contribution. We greatly value your support!

SPECIAL THANKS TO EDITOR BIERCE RILEY!

The Society extends its great appreciation to Bierce Riley who served as temporary Editor of our newsletter, On the Level. We especially acknowledge the new format, which she created. It has been receiving universal acclaim! Bierce has had to move on to manage her other professional and personal obligations. We will strive to maintain the high standards that she set for us!

We also wish to recognize Society Vice President Joe Macasek who has been donating his professional graphic design services to produce the layout of the newsletter and coordinate its printing.

CAMDEN & AMBOY RAILROAD SYMPOSIUM

Saturday, November 10, 2007
 Bordentown, New Jersey

A day-long symposium highlighting the history of the Camden & Amboy Railroad and commemorating the 175th anniversary of the first run of the John Bull locomotive will be held at Bordentown as part of the 325th anniversary of the founding of the city. The exact times and location of the symposium will be announced soon.

The history of the Camden & Amboy and the Delaware & Raritan Canal are closely interrelated and

will be described in presentations by notable historians from the Hagley Museum and Library, the Smithsonian, the Railroad Museum of Pennsylvania and by our Canal Society Board Member Bill McKelvey.

The symposium is being organized by the Camden & Amboy Railroad Historical Group (C&ARRHG). Registration costs \$30 for the general public and \$15 for members of the C&ARRHG. For more information or to request a registration form contact Mark Liss at (215) 757-6631 (evenings) or at mbliss2@verizon.net.

MEETINGS

(Continued from page 2)

Friday – November 16, 2007 at 7:30 p.m. – Refreshments at 7:10

Tramways to the Morris Canal

Morris County Cultural Center – 300 Mendam Road, Morris Township

ANTHONY L. TROHA

The presentation will examine the railways which carried material, chiefly iron ore, to the Morris Canal. A brief history of the development of such rail lines will be explored, followed by an overview of the ones that served the canal. Unfortunately, the remnants of most of these tramways have been obliterated by development. Recently, however, a large tract of the Dickerson Mine property has been preserved as open space, thereby saving a significant portion of the route of the Ferro Monte Railroad, which served many of the iron mines in Mine Hill Township. Although it never reached the canal as was initially intended, the Ferro Monte Railroad is one of the best known examples of this type of operation, so a detailed exposition of it will be made to convey how these tramways functioned on a daily basis.

Dr. Anthony L. Troha, received his doctorate in Applied Science from the University of California at Davis and holds other degrees from Stevens Institute of Technology. He is currently an Adjunct Professor of Physics at two colleges in northern New Jersey. A member of seven historical societies, he is the newsletter editor for two of them. His primary historical research is concentrated on northern New Jersey iron mines and the transportation routes that brought their ore to the regional furnaces.

Directions to the Morris County Cultural Center

FROM THE MORRISTOWN GREEN, turn right onto Washington St (County Route 510, formerly NJ Route 24). Travel 3.5 miles west toward Chester. Pass the roads to the Delbarton School and Lewis Morris County Park on the left. After the curve and long white picket fence, look for a sign for the MUA on the right, pointing toward the driveway, which is marked by a street light and lighted directional sign. Make a sharp left turn and drive uphill to a Spanish-style stucco building at the top. Parking is in the lot to the left at the top of the hill. Once inside the main entrance hall of the Cultural Center, the auditorium is to the left. Restrooms are upstairs, with elevator access.

FROM ROUTE 287 SOUTH, take Exit 35, Madison Ave. Turn right at the top of the ramp onto Madison Ave (Route 124). Bear right at the next light onto South Street, continue straight through a series of traffic lights and around the Morristown Green. Turn right onto Washington St. (County Route 510, formerly Route 24). Continue as described above.

FROM ROUTE 287 NORTH, take Exit 35, South Street/Madison Ave. At the end of the ramp, turn left onto South St, continue straight through several lights and travel around the Morristown Green. Turn right onto Washington St, (County Route 510, formerly Route 24). Continue as described above.

CANAL SOCIETY ELECTION

The following slate of Directors is offered for election at the September 21 membership meeting:

Joyce Hussa	3 year term	Dick Simon	3 year term
Judy Keith	3 year term	Laura Szwak	3 year term
Barbara Murray	1 year to fulfill unexpired term		

VOLUNTEERS NEEDED FOR SOCIETY'S BOAT CREW

For many years the Canal Society dreamed of having a boat that could be used to provide public tours and interpretation on the remains of our State's historic towpath canal system. A few years ago that dream became a reality when a used pontoon boat was donated to the Society and a crew of members labored to restore it to operable condition. This vessel has now plied the waters of Lake Hopatcong and the Morris Canal at Waterloo and Wharton. This past spring it nearly made it into the Delaware & Raritan Canal and we hope that we can have a successful run on the D&R in the not too distant future.

Our Boat Committee, headed up by Dick Draper, has been diligently working for the past two years or so to maintain our pontoon boat and make it available for boat rides at Society events. Rod Howarth has been generously providing his truck to haul the boat on its trailer and to launch and remove it from the canal sites.

The Society is now seeking more volunteers to assist with maintenance and operation of our boat. Persons experienced in boating, and familiar with marine mechanical equipment, would be ideal. We also need additional qualified pilots with marine licenses and a clean boating record to serve as "Captains" at our boating events. Interested parties should contact Dick Draper at 973-627-7455.



Baker's Bridge, Morris Canal, Kenvil, NJ

ASSURING THE FUTURE OF THE PAST

We believe that it is extremely important to preserve history and we are sure that you feel the same way since you are a member of the Canal Society of New Jersey. However, we are asking you now to think about the future – in particular, the future of the Society. It's a fact that sometime in the future each of us will be "history". What is not necessarily a fact is that the Society will be around in the future to tell its story of the history of New Jersey's canals and the people who made them a reality.

Each of our members and friends can help "Assure the Future" of the Society by remembering it in their wills.

If you don't have a will you should! And it would be a wonderful gift if you would include the Society in your will with a designated bequest.

If you already have a will, it is not necessary for you to change it to remember the Society. You can add a "codicil" to your will to include a gift to the Society. Anyone can add a codicil to their will as long as it meets legal requirements. A codicil must be signed and witnessed just as the original will was witnessed. It should refer to your original will by date and you should attach the codicil to the original will. While you can do this yourself, using an attorney is always best.



Bierce Riley models the Canal Society hat.

CANAL SOCIETY BASEBALL CAPS AVAILABLE

Thanks to the generosity of Society member Rod Howarth, new baseball caps with the Canal Society logo are available for sale. The caps are tan with an embroidered oval green and blue logo with the lettering "Canal Society of New Jersey" across the front. These caps sell for \$15 each and will be available for purchase at the September membership meeting on September 21. Rod has underwritten the cost of the caps and is splitting any profit realized with the Society. Thank you Ron!

SOCIETY TREASURER RETIRES

Canal Society Treasurer, Clarence Eich has recently retired from his financial management position with our organization after 12 years of diligent service. We are extremely grateful for his many years of managing our financial accounts, investments and insurance policies. We can never express sufficient gratitude for his contribution to the operation of our organization. We wish him the best in his retirement!

(Continued on page 10)

ON THE LEVEL



THE CANAL SOCIETY OF NEW JERSEY

PO Box 737, Morristown, New Jersey

ON THE LEVEL is published three times a year by the Canal Society of New Jersey.

Canal Society Administrative Assistant, Phyllis Stanaback – 908-832-2888

OFFICERS

President: Brian Morrell
Vice President: Joe Macasek
Treasurer: Vacant
Recording Secretary: Dennis Furbush
Corresponding Secretary: Harry Rescigno
Past President: Robert Barth

DIRECTORS

Bob Bodenstein Barbara Murray
 Richard Draper David Phraner
 Gisela Drennan Bierce Riley
 Mark Hamill Richard Simon
 Judy Keith Laura Szwak
 Bill McKelvey

CONTACT INFORMATION

Treasurer: Interim Financial Administrator
 Kate Gordon – 973-579-5523

Membership Chairman: Marilyn Craine
 973-667-4335 – mandrcraine@verizon.net

Museum Director: Bruce Tell
 609-967-0090 – peermont@verizon.net

Museum Guide Coordinator: Art Bird
 908-903-1468

Refreshments: Barbara Murray
 973-887-1680 – bjmurray57@optonline.net

www.CanalSocietyNJ.org – 908-722-9556 – nj-cnsl@googlegroups.com

SOCIETY TREASURER RETIRES

(Continued from page 9)

Our accounts are now being managed on an interim basis by Kate Gordon, a paid consultant and head of Legacy, a firm that works with history

oriented nonprofits. We are seeking a new Treasurer to fill the vacancy left by Eich's retirement. Interested parties should contact our Administrative Assistant Phyllis Stanaback at 908-832-2888.

CALENDAR OF EVENTS

Saturday, Sept. 8	Waterloo Canal Heritage Day
Friday, Sept. 21 7:30 p.m.	Membership Meeting <i>Morris County Cultural Center</i>
Saturday, Sept. 22	Waterloo Canal Heritage Day
Saturday, Sept. 22	D & R Canoe Trip
Saturday, Sept. 29	State Park Volunteer Awards Presentation at Waterloo
Fall Field Trip	Fri – Mon, Oct 5 – 8 <i>Canals of Eastern NY State</i>
Saturday, Oct. 6	Waterloo Canal Heritage Day
Saturday, Oct. 20	Waterloo Canal Heritage Day
Friday, Nov. 16 7:30 p.m.	Membership Meeting <i>Morris County Cultural Center</i>

www.CanalSocietyNJ.org

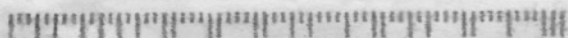
nj-cnal@googlegroups.com

LATE BREAKING NEWS!

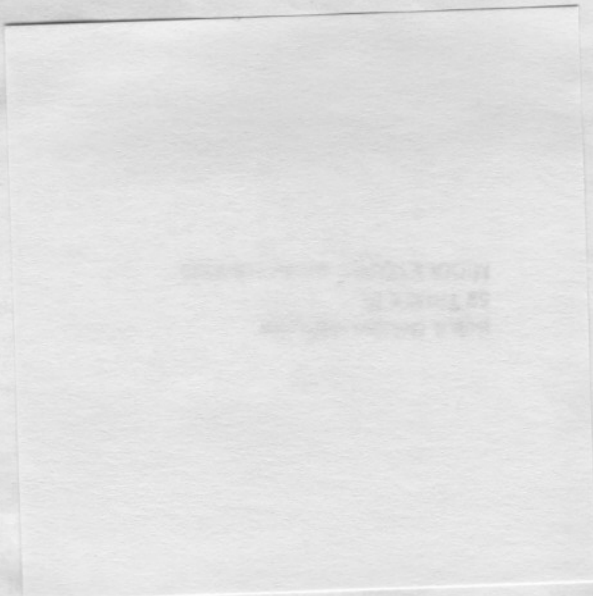
The Canal Society has just learned that it is the recipient of a new \$6,000 general operating support grant from the New Jersey Historical Commission, a division of the Department of State. We are extremely grateful for this generous support which is a great help toward covering some of our operational expenses. The Society extends a big THANK YOU to the New Jersey Historical Commission!



The Canal Society of New Jersey received an operating support grant from the New Jersey Historical Commission, a division of the Department of State.



07744+2333-89 C017



ADDRESS SERVICE REQUESTED

Morristown, New Jersey

PO Box 737

CANAL SOCIETY OF NEW JERSEY