

# ON THE LEVEL



## THE CANAL SOCIETY OF NEW JERSEY

# 13<sup>TH</sup> ANNUAL WATERLOO CANAL DAY OUR BEST EVER!

Approximately 1,200 members of the public joined the Canal Society on June 21st to celebrate Waterloo's Morris Canal heritage and learn about the fascinating history of the canal. For the second

year in succession the New Jersey Division of Parks & Forestry co-sponsored the event along with the Canal Society. Once again we are extremely honored to have had the Division as a partner, enabling us to bring historic interpretation to the public at Waterloo when the village is otherwise closed. We are very grateful to New Jersey Department of Environmental Protec-

tion Assistant Commissioner Amy Cradic, her assistant Sally Lane and State Park Superintendent Helen Maurella and her staff for making this partnership possible!

Throughout the day the following interpretive tours and exhibits were available for the visiting public: mule-towed canal boat rides for about 260

*(Continued on page 2)*



Above: "History Alive" provided live period music on Canal Day and a public portrayal of a canal boat captain. Right: The public enjoyed touring the grounds of Waterloo Village and participating in the many educational events.



## MEETINGS

**Friday – September 19, 2008 at 7:30 p.m. – Refreshments at 7:10**

### **The Historic Mount Hope Mines and Shipping on the Morris Canal**

Morris County Cultural Center – 300 Mendham Road, Morris Township

RICHARD KEHOE

At one time Morris County was famous for its iron mines. Mining was a prominent occupation and mining communities were present at Mount Hope, Mine Hill, Hibernia and other locations. The Morris Canal shipped large quantities of these mined Morris County ores and had several ore docks and ore transshipment locations along its banks.

Tonight we will hear about the history of the Mount Hope, Teabo, Allen and Richard mines and their associated ore transportation sys-

*(Continued on page 2)*



NJ Blacksmith Association provided smithing demonstrations throughout the day.

# 13<sup>TH</sup> ANNUAL WATERLOO CANAL DAY

(Continued from page 1)

people on the Village's section of the Morris Canal; guided tours of the Society's New Jersey Canal Museum and Morris Canal sites in the Village; walking tours by the Village's main street buildings and in the Methodist Church; historic architectural tours of

the primary historic buildings; garden tours; interpreted tours of the Lenape Island; exhibits on New Jersey's historic navigation canals, the Morris Canal Greenway and the Sussex Mine Railroad; a canal photo exhibit and contest; an ongoing demonstration of blacksmithing techniques; interactive 19th-century games for children; an illustrated presentation on Waterloo's history; and live period music and a first person interpretation of a canal boat captain. The day was capped off by a wonderful picnic for Society members, catered by the Waterloo United Methodist Church.

In addition to DEP and the Division of Parks & Forestry we wish to thank the following individuals and organizations for making Waterloo Canal Day a major success: Dick Draper and his wonderful boat crew; Margaret Hickey of HJGA Consulting, Architecture & Historic Preservation; Mark Hamill, Chair of Waterloo Canal Day; Joyce Hussa for her publicity for the event; Elise Hussa, for the children's games; Harold Kafka who donated the use of his mule "Sundance"; Sue and John Kraft of Lenape Lifeways; New Jersey Blacksmith Association; Richard Pawling of "History Alive"; Jeanne Quinn for garden tours; Waterloo United Methodist Church; Warren County Morris Canal Committee; Kevin Wright; and the 50 Society member volunteers who pitched in to make the day possible. ■



Above: A demonstration of a working canal lock model is enjoyed by the public in front of the Society's NJ Canal Museum. Below: Children had a great time trying their hand at 19th-century games.



Two visitors to the village are taking a break in between guided walking tours.

## MEETINGS

(Continued from page 1)

tems that connected with the Morris Canal at Rockaway and Wharton. These iron sites and their connecting tramway and rail line alignments are all components of the Society's growing Morris Canal Greenway.

**Dick Kehoe** is a member of the Historical Society of the Rockaways and has spent years researching original land transactions and maps in the heart of Rockaway Township's iron mining district. His talk will illustrate many of his discoveries over this long period of research and will reveal little known facets of the area's iron heritage and interrelationship with the Morris Canal.

**Friday – November 21, 2008 at 7:30 p.m. – Refreshments at 7:10**

### Documentary and Architectural Research at Waterloo Village

Morris County Cultural Center – 300 Mendham Road, Morris Township

MARGARET HICKEY

HJGA Consulting, Architecture & Historic Preservation

As part of the State of New Jersey's efforts to determine the future of Waterloo Village and how to preserve its historic buildings, a Master Plan study has been underway for about the past six months. This extensive survey has included general background historical research on the village and an in-depth architectural analysis of each of the site's primary historic buildings. As part of this latter process, all of the structural and maintenance issues are being examined building by building and prioritized for future re-

(Continued on page 8)

For directions to the Morris County Cultural Center see page 8.

## NEW JERSEY HISTORICAL COMMISSION CONTINUES SUPPORT OF CANAL SOCIETY

The Canal Society has recently learned that it is the recipient of a new \$6,000 general operating support grant from the New Jersey Historical Commission, a division of the Department of State. We are extremely grateful for this generous support, which is a great help toward covering some of our operational expenses. The Society extends a big THANK YOU to the New Jersey Historical Commission! ■

# CROWDS ENJOY WHARTON CANAL DAY

Saturday, August 23 had exceptional August weather which helped to draw nearly 2,000 people to Wharton's Hugh Force Park and Wharton Canal Day. An outstanding section of the Morris Canal is located within the park, preserving the appearance of the canal when it was in operation for navigation. A prominent feature of Canal Day was the Canal Society's Canal Explorer pontoon boat, which provided mule-drawn public boat rides on the canal throughout the day. The ride was extremely popular and drew a crowd of about 250 people. A waiting line for the boat ride was present all day long. The public enthusiastically responded to the boat ride and the historic interpretation about the Morris Canal, provided by Society volunteers on the boat.

Throughout Canal Day the public also was able to try canoeing and kayaking on the canal, a fun experience for all. Canal Society members manned an exhibit table on New Jersey canal history and a sales table of items providing information on both the Morris and Delaware & Raritan canals. Three guided tours were led by Society Vice President Joe Macasek along the



Visitors learned about the Morris and Delaware & Raritan canals at the Society's exhibit table.

canal sites within the park, engaging the participants in the heritage of the Morris Canal. All in all it was an exciting day to see so much activity on the Morris Canal, both in the form of boating and strolling along the historic towpath! ■



Top: Society Administrative Assistant Phyllis Stanback and member Bill Pegg helped staff our exhibit table. Left: The new Hugh Force Canal Park entrance sign was unveiled for Canal Day.



## MEMBERSHIP RENEWAL TIME IS HERE!

Very soon you will be receiving your notice that it is time to renew your annual dues for the Canal Society of New Jersey. As we hope is apparent from this and other recent newsletters, many exciting things are happening in the Canal Society. We are having more events and public programming and are actively engaged in several preservation projects. Soon we will enter our 40th Anniversary year of the Society! We hope that we can count on your continued support to make it possible for us to sustain our many activities and projects. We ask you to show your support by promptly responding to your renewal notice soon after you receive it. We sincerely hope that you will renew your membership and if at all possible increase your dues contribution. We greatly value your support! ■



Society member, Richard Cramond helps passengers disembark from our Canal Explorer boat.

# UPDATE ON WATERLOO



Interior view of the Smith Store at Waterloo, the most intact Morris Canal store surviving in the state.

By now many of you have seen the news that the Waterloo Foundation for the Arts is suing the State of New Jersey, seeking court approval for the Foundation to remove all of the contents of Waterloo Village's buildings and to auction them off, reportedly to pay debts owed by the Foundation. The court has been encouraging the Foundation and the State to negotiate a settlement in this case. Recent newspaper accounts indicate that such a settlement may be at hand.

For some 40 years the Waterloo Foundation for the Arts has operated as a nonprofit, 501(c)(3), tax exempt organization, maintaining its collection for the educational benefit of the public. During those years, in addition to enjoying tax exemption, the Foundation has received many donations of objects that were related to Waterloo's history or dated from the village's period of historical significance. We hear from the donors of these objects that they had the understanding that their donated items would be a permanent part of Waterloo's collection, on display or at least maintained accessible for the benefit and enjoyment of the public in perpetuity. How can these objects and the rest of the collection now be considered a commodity that can be sold off to pay the Foundation's debts?

Besides the issue of Public Trust, re-

moval of Waterloo Village's collection would have a major negative impact on the ability to provide public historic interpretation at the village in the near future or perhaps in the foreseeable future. Stripping the village of all of its contents leads one to ask, "Will the empty buildings at Waterloo ever reopen

for the public's educational experience and enjoyment?"

We recognize that there are parts of the Waterloo collection that are not historically accurate to the site and its period, but many objects are appropriate and readily lend themselves to interpretation of the village as a Morris Canal town, demonstrating lifeways during the canal's operation. The most obvious examples are the Smith Store and the blacksmith shop. The store is the most intact, most interpretable Morris Canal store remaining along the entire 102-mile alignment of the Canal. An original ledger from the store is part of the Waterloo collection. How can one overemphasize the value of such resources! The loss of this intact collection would have an incalculable negative impact on Waterloo and on the overall Morris Canal National and New Jersey Register Historic Site. Similarly, the blacksmith shop with its intact contents illustrates what once was a commonplace facility along the canal's alignment to service the mule draft animals towing canal boats. Waterloo's blacksmith shop is a one of  
*(Continued on page 9)*

## VOLUNTEERS REFURBISH SOCIETY'S CANAL MUSEUM

This past spring a plumbing leak at the Canal Society's Museum at Waterloo flooded the upstairs bathroom and exhibit room below. Miraculously our canal exhibits were not damaged! However, a portion of the first floor exhibit room ceiling had to be replaced, along with various plumbing repairs. We are extremely grateful to Society member Norm Penny who generously donated his time and many materials to carefully repair the damage and help get the museum in proper shape for Waterloo Canal Day. Following the repairs the ceiling looks as good as new!

The repairs turned out to be a great opportunity to freshen part of the museum with a new coat of interior paint. It had probably been 15 to 20 years since the last overall interior painting. Once again we are grateful to Norm

Penny, Bruce Tell, Judy Keith, and Brian Morrell for their volunteer hours to clean and paint one of the main first floor exhibit rooms and the entrance hall, stairway and upstairs hall. Norm also painted the front porch deck which was quite worn and peeling. We hope to continue to paint the museum interior as time allows this fall.

We also thank Richard Cramond, Bob Barth, John and Gisella Drennan, Dick Draper, Judy Keith, Joyce Hussa and Brian Morrell for helping to reassemble the exhibits after the completion of the repainting. To finish off the improvements, Judy Keith sewed new curtains for the windows in several rooms. We greatly appreciate all of this help which provided our museum with a well-maintained appearance for this season's Waterloo Canal Day and Canal Heritage Day programs! ■

# UPDATES ON THE MORRIS CANAL GREENWAY

## Mount Olive Township

The Canal Society, the Morris County Park Commission and the Mount Olive Trade Zone are exploring options for preserving the site of Lock 2 West and the contiguous one-half-mile section of water-filled Morris Canal (the best-preserved section of the Morris Canal in the State). The Trade Zone has plans to develop at least part of this property with an extensive townhouse complex. The canal site was part of the BASF land swap of many years ago and is partially under the control of the State through outright ownership and a weak easement that allows the property owner to encroach on the canal with development, pipelines and roadways.

A major tract of land adjacent to the site of Plane 3 West, and incorporating part of the plane, is the subject of an acquisition deal that is being negotiated by the Morris County Park Commission and the Canal Society. This large tract of wooded land contains a stream, some wetlands, at least part of the plane's tailrace and another building ruin from a structure that was contemporary with the canal's operation. An application has been submit-

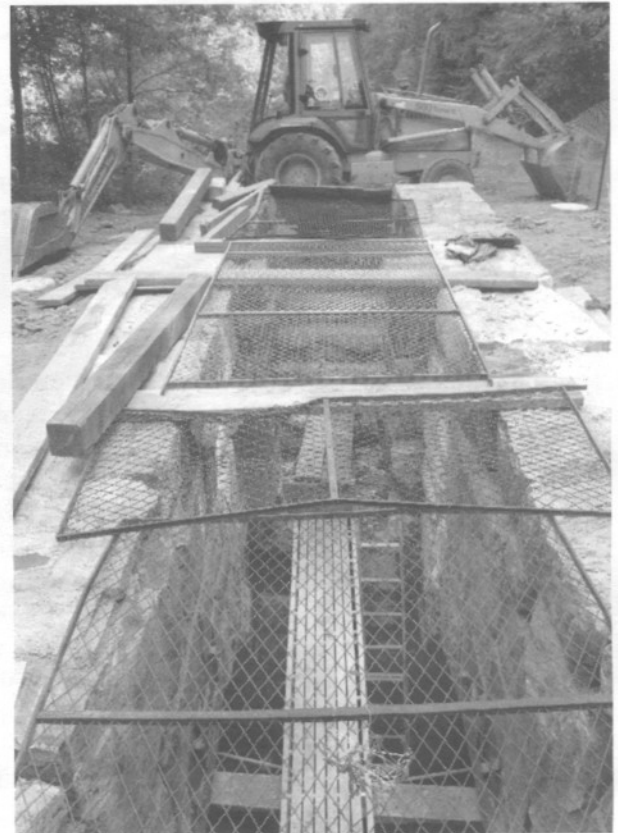
ted to the Morris County Open Space and Farmland Preservation Trust to seek funding to match the Society's Green Acres grant to enable an acquisition of the property to occur. It is hoped that an agreement can be reached with the property owner and that the County funding is forthcoming to enable the Society to secure this important tract of land as part of the Morris Canal Greenway. The Division of Parks & Forestry has listed this land as a high priority for inclusion within Allamuchy Mountain State Park.

## Roxbury Township

Preservation work on the outstanding turbine chamber and tailrace of Plane 2 East in Ledgewood Canal Park is now underway and should be completed before winter. This project is rebuilding the collapsing stone archway at the junction of the tailrace tunnel and the turbine chamber. It is also repointing some of the open masonry joints in the turbine chamber, securing the top of the turbine chamber for public safety purposes and is providing drainage control at the site so that runoff will not continue to enter the turbine chamber and threaten its masonry structure. This project is costing approximately \$200,000 and is being funded by the Morris County Historic Preservation Trust Fund, with a matching component from Roxbury Township. The Canal Society worked closely with the township to help attract the necessary funding for the project.

## Wharton Borough

The borough has recently installed a new sign at the entrance of Hugh Force Park (see photo on page 3) indicating that the site is part of the Morris Canal Greenway and highlighting the fact that the park is centered around the Morris Canal. The sign was designed



*View of the in-progress construction at the turbine chamber at Ledgewood Canal Park. The walls of the chamber are being raised and leveled to receive a metal grating to protect the public.*

by Society Vice President Joe Macasek and is mounted in a very attractive stone masonry base. Additional new interpretive signage has been designed by Joe Macasek and will soon be installed within the park along the canal sites. This signage is similar to the National Park Service's wayside exhibit signs, incorporates historic views of the canal and Lock 2 East at Wharton and includes text that discusses various facets of the operation of the canal. The Borough has also created a new municipal logo that incorporates the Morris Canal in the design. Joe Macasek was hired by the borough to create this new logo.

Wharton continues to seek funding for the next phase of the engineering study of Lock 2 East to further explore the feasibility of restoring the buried lock to an operating condition. This year's Wharton Canal Day was a huge success with much boating activity occurring on the section of the Morris Canal within Hugh Force Park (see separate article in this newsletter).

*(Continued on page 8)*

## MORRISTOWN FALL FESTIVAL

The Canal Society will once again be exhibiting at the annual Morristown Fall Festival on Sunday, September 28th from 11:00 am to 5:00 pm. This event includes informational and entertaining booths operated by numerous businesses, nonprofits and governmental agencies and is centered around the Morristown Green and nearby streets. Barbara Murray is coordinating the Society's booth at the Festival and would appreciate assistance during the day. To volunteer your help, please contact Barbara at 973-887-1680 or [bjmurray57@optonline.net](mailto:bjmurray57@optonline.net). The Festival is a great opportunity for the Society to reach a large number of people with information about our historic canals, our programs and our organization. ■

# CANAL HERITAGE DAYS AT WATERLOO CONTINUE TO SHOWCASE NEW JERSEY'S PREMIER MORRIS CANAL TOWN!

This year the Canal Society is continuing to present Canal Heritage Days at Waterloo on two Saturdays a month during July through October in cooperation with the New Jersey Department of Environmental Protection and the Division of Parks & Forestry.

So far we have implemented four of this season's Heritage Days, each of which have turned out to be a great success! Public attendance is greatly exceeding last year's figures and this year we are offering our canal boat ride during every Heritage Day. The public continues to demonstrate its love and devotion to Waterloo Village and its fascination for the Morris Canal. The universal public opinion we keep hearing is "Waterloo Village must be preserved and its historic buildings reopened to the public in the near future!" The public also is very grateful to the Society for making the Village available to them, albeit on a limited basis.

Our boat ride has proven to be a major attraction, despite the fact that the boat is a modern pontoon vessel powered by an electric motor. People tell us that they enjoy experiencing the Morris Canal, gliding along its still waters. Our New Jersey Canal Museum also is proving very popular and the exhibits and videos are generating great interest. We are very grateful to our



*Our Canal Explorer boat continues to be a main attraction at Canal Heritage Days.*

Society members who are volunteering to staff these Canal Heritage Days so that we can have the Village open for the public's enjoyment!

We will be presenting four more Canal Heritage Days at Waterloo during this September and October on the following Saturdays: September 13 and 20 and October 11 and 25. On these days the Village grounds will be open from 11 a.m. to 5 p.m., along with guided tours of the main street, the canal sites and our Canal Museum. Our canal boat ride will be featured and the Society will have its sales table available. There is no charge for any of the activities, but free will donations are appreciated.

Our goal is to offer the public an opportunity to experience the unique canal heritage of the Village, despite the closure of the site for building tours and other programs. We are seeking Society members who are willing to help on these Canal Heritage Days.



*Visitors to Waterloo Canal Heritage Days are greeted at the Society's information table.*

We need staffing for our Canal Museum, to lead tours of the village and canal sites, to help with operating our pontoon boat, to greet people at the entrance gate and to staff our sales table. Volunteers should contact Phyllis Stanaback at 908-832-2888 to offer their services. ■

## ASSURING THE FUTURE OF THE PAST

We believe that it is extremely important to preserve history and we are sure that you feel the same way since you are a member of the Canal Society of New Jersey. However, we are asking you now to think about the future – in particular, the future of the Society. It's a fact that sometime in the future each of us will be "history". What is not necessarily a fact is that the Society will be around in the future to tell its story of the history of New Jersey's canals and the people who made them a reality.

Each of our members and friends can help "Assure the Future" of the Society by remembering it in their

wills. If you don't have a will you should! And it would be a wonderful gift if you would include the Society in your will with a designated bequest.

If you already have a will, it is not necessary for you to change it to remember the Society. You can add a "codicil" to your will to include a gift to the Society. Anyone can add a codicil to their will as long as it meets legal requirements. A codicil must be signed and witnessed just as the original will was witnessed. It should refer to your original will by date and you should attach the codicil to the original will. While you can do this yourself, using an attorney is always best. ■

# WELL-DESERVED THANKS TO "CAPTAIN" DRAPER!

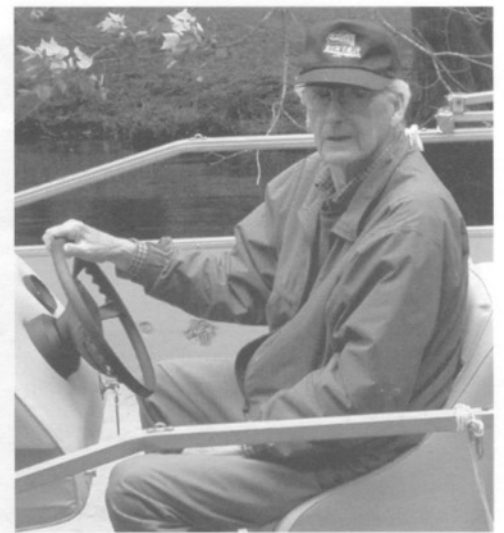
Several years ago Society Board Member Dick Draper volunteered to head up a Boat Committee to spearhead the efforts to refurbish a used pontoon boat that had been donated to the Canal Society. Dick was the first to admit that he had no experience with boats and their repair and operation, but he was game to give the task a try.

For many years the Canal Society had dreamed of having a boat that could be used to provide public tours and interpretation on the remains of our State's historic towpath canals. The donated pontoon boat seemed to be a good first step in that direction, but we were not sure that it would be feasible to operate it and questioned whether such a modern-looking vessel could attract interest in boating on our historic canals.

events by the availability of boat rides on our canals.

Dick has worked what I consider to be no small miracle. Last year was a first pilot year for the boat, with its use at Waterloo Canal Day, Wharton Canal Day and a Waterloo Canal Heritage Day. The results were promising. After considerable difficulty the crew managed to get the boat in and out of these remnant canal sections and transported it between them. Overcoming several mechanical issues and experimenting with the best source of motive power, the boat crew was able to provide public rides in its first year for a few hundred people. It was a good start.

Now, in its second year of major operation, Canal Explorer is proving to be a great success! So far, in this in-



*Captain Dick Draper*

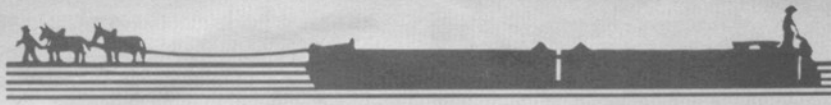
great interest to the public.

We thank you Dick for making this miracle happen! We know that it has not all been fun. There have been many challenges and frustrations along the way, but we sincerely hope that you can now bask in the glow of your success and accomplishments! It is well deserved! Out hats are off to you and your dedicated crew!

But Dick and the Boat Committee aren't stopping their efforts. Now, through the generosity of Bill McKelvey the Society has seed money to considering buying or having a bigger boat built with the capacity to carry more passengers. The Committee has been exploring some options and has made site visits to observe boat operations on the Union Canal in Lebanon, PA and on the Erie Canal in Camillus and Rome, NY. We look forward to continued progress in this endeavor.

Brian Morrell, President

## CANAL EXPLORER



Now after these several years Dick has overcome any number of obstacles, assembling a team to complete the restoration of the pontoon boat (now dubbed "Canal Explorer") and meeting the great challenge of transporting, launching and then removing Canal Explorer from sections of the Morris Canal at Wharton, Waterloo and at Washington Crossing on the Delaware & Raritan Canal. He has had some wonderful support, especially from Rod Howarth and Don Seath, but Dick has continued to be the spearhead of the effort.

Now all of this labor has begun to bear remarkable fruit! Despite its starkly modern appearance and limited capacity for passengers, Canal Explorer has handily proven that the public finds boating on our canal remnants engaging, is eager to learn about our historic canals and is attracted to our

progress year of programming at Waterloo, Wharton and Washington Crossing we have provided rides for approximately 1,000 members of the public! And we are only halfway through the Canal Heritage Days at Waterloo! Clearly the boat is a success and is of

---

## SOCIETY'S NEWSLETTER RECEIVES RECOGNITION!

The Canal Society's On The Level newsletter is the recipient of the First Prize from the League of Historical Societies of New Jersey 2007 Annual Publications Awards. The award is given in recognition of distinguished achievement for the publication of a newsletter. The Society gratefully received the

award in the form of a certificate, dated June 14, 2008 and signed by James T. Raleigh, League President and Kevin M. Hale, Secretary. We are proud to be an award winner and are most fortunate to have pro bono design services for our newsletter from MacGraphics, Joe Macasek's graphics design firm. ■

## MEETINGS

(Continued from page 2)

pairs. The study is also considering the historical significance of each of the various buildings and what part they play in telling the story of Waterloo's development. When completed, this plan will be an important step toward reopening and interpreting the village to the public.

Margaret Hickey's firm, HJGA Consulting, has been conducting the Master Plan study at Waterloo. She will be providing a power point presentation on the results of that study this evening. It is the first time that such a comprehensive study has been conducted at Waterloo and its findings should prove to be a fascinating look at the village from a different perspective.

**Margaret Hickey** is an Historic Preservation Specialist with HJGA Consulting, Architecture & Historic Preservation, Inc., Montclair, NJ. HJGA has a long track record of providing high quality professional architectural and historic preservation services for historic sites scattered across New Jersey. Margaret Hickey joined HJGA in 1999 after many years as a Program Officer at New Jersey Historic Trust. She has a Master of Science in Historic Preservation from Columbia University and a Bachelor of Architecture from the New Jersey Institute of Technology. Ms. Hickey and her associates at HJGA are also working with the Canal Society on Morris Canal projects at Saxton Falls, Ledgewood and Wharton.



Margaret Hickey

## MORRIS CANAL GREENWAY

(Continued from page 5)

### Stanhope Borough

For nearly a year now the section of the Morris Canal along Main Street, and the side branch of the canal in back of the Post Office, have been sitting drained and full of muck and weeds. These sections of the Morris Canal were among the few lengths of prism that remained water-filled after the State's dismantling of the overall waterway in the 1920s. Water had to be maintained in the Stanhope portion of the canal due to water rights that were still owned by a local industry. The branch canal behind the Post Office is remarkably well preserved and contains the most intact stop gate and waste gate structures along the entire length of the Morris Canal. A turning basin is located at the end of the branch canal. The branch canal and its historic remains are owned by the Division of Parks & Forestry; the section of canal along Main Street is owned by the municipality.

The borough drained the sections of the Morris Canal in Stanhope due to their concerns about the condition of a concrete pipe that provides water into the canal prism. While considering how to investigate this pipe and assess its condition, the borough has advanced plans to dredge the dry canal bed to return it closer to its historic configuration. This process will have to be very carefully implemented to protect the historic liner, other historic structures in the prism and any artifacts that might be present in the sediment. The operation requires supervision from cultural resource professionals. It is hoped that all of these procedures can be worked out soon so that the Morris Canal can once again be flowing through downtown Stanhope. ■

### Directions to the Morris County Cultural Center

**FROM THE MORRISTOWN GREEN**, turn right onto Washington St (County Route 510, formerly NJ Route 24). Travel 3.5 miles west toward Chester. Pass the roads to the Delbarton School and Lewis Morris County Park on the left. After the curve and long white picket fence, look for a sign for the MUA on the right, pointing toward the driveway, which is marked by a street light and lighted directional sign. Make a sharp left turn and drive uphill to a Spanish-style stucco building at the top. Parking is in the lot to the left at the top of the hill. Once inside the main entrance hall of the Cultural Center, the auditorium is to the left. Restrooms are upstairs, with elevator access.

**FROM ROUTE 287 SOUTH**, take Exit 35, Madison Ave. Turn right at the top of the ramp onto Madison Ave (Route 124). Bear right at the next light onto South Street, continue straight through a series of traffic lights and around the Morristown Green. Turn right onto Washington St. (County Route 510, formerly Route 24). Continue as described above.

**FROM ROUTE 287 NORTH**, take Exit 35, South Street/Madison Ave. At the end of the ramp, turn left onto South St, continue straight through several lights and travel around the Morristown Green. Turn right onto Washington St, (County Route 510, formerly Route 24). Continue as described above.



# DELAWARE & RARITAN CANAL

## CANAL DAYS AT THE ABRAHAM STAATS HOUSE

Saturday – Sunday, September 13 & 14

10:00 a.m. – 4:00 p.m. both days  
17 von Steuben Lane, South Bound Brook

Enjoy a Civil War-era weekend at the historic Abraham Staats House, built c.1740 and located along the banks of the Delaware & Raritan Canal. Exhibits will feature the Canal Society's display on New Jersey's canals and our sales table, living history presen-

tations and special guest speakers. Tours of the Staats House and its collection will be available throughout the event for a nominal fee. Also featured will be Civil War re-enactors, interviews with President Lincoln, and a power point presentation on the Delaware & Raritan Canal. Canal Days is hosted by the South Bound Brook Historic Preservation Advisory Commission and the Friends of the Abraham Staats House, Inc. Admission to the grounds and parking are free. ■

## UPDATE ON WATERLOO

(Continued from page 4)

a kind survival along the Morris Canal's alignment. In addition, the village has within its collection an early 20th-century boat that plied the waters of Lake Hopatcong and likely the Morris Canal Feeder.

Beyond the primary canal-related structures and collection, other building contents and articles demonstrating life and crafts of the canal period abound at Waterloo and are essential for public interpretation of a Morris Canal town. There also are original Smith Family documents and objects. What will survive at the village at the end of this court case or out of court settlement? At this time we do not know what the outcome will be. However, it is imperative to retain the appropriate parts of the collection for the village's future viability! In the worst case scenario, if the collection goes on the auction block, the Society will find itself using its limited resources trying to buy back New Jersey's history – an outrageous and grim picture indeed!

Finally, Percy Leach and Louis Gualandi had the remarkable vision to save Waterloo Village from oblivion and preserve it as a world class site, not only for residents of our State but for tourists across this country and in fact the world! Many hundreds of thousands of people have experienced the magic of this site over the past 40 years,

truly a gift from Leach and Guilandi. Will their legacy be shattered by stripping away so many of the historical

vestiges at their cherished village? Such an occurrence is unconscionable and must not be allowed to occur. ■

## ON THE LEVEL



THE CANAL SOCIETY OF NEW JERSEY  
PO Box 737, Morristown, New Jersey 07963-0737

ON THE LEVEL is published three times a year by the Canal Society of New Jersey.  
Canal Society Administrative Assistant, Phyllis Stanaback – 908-832-2888

### OFFICERS

**President:** Brian Morrell  
**Vice President:** Joe Macasek  
**Treasurer:** Vacant  
**Recording Secretary:** Dennis Furbush  
**Corresponding Secretary:** Harry Rescigno  
**Past President:** Robert Barth

### DIRECTORS

Bob Bodenstein Bill McKelvey  
Richard Draper David Phraner  
Mark Hamill Bierce Riley  
Joyce Husa Richard Simon  
Judy Keith Laura Szwak

### CONTACT INFORMATION

**Treasurer:** Interim Financial Administrator  
Kate Gordon – 973-579-5523

**Membership Chairman:** Marilyn Craine  
973-667-4335 – mandrcraine@verizon.net

**Museum Director:** Bruce Tell  
609-967-0090  
peermont@verizon.net

**Refreshments:** Joyce Husa  
973-625-8739  
jwh2oh@yahoo.com

**Museum Guide Coordinator:** Art Bird  
908-903-1468

NJHC

The Canal Society of New Jersey received an operating support grant from the New Jersey Historical Commission, a division of the Department of State.

908-722-9556 – nj-cnal@googlegroups.com – www.CanalSocietyNJ.org

# SOCIETY RECEIVES GRANTS FOR MAHLER HOUSE PROJECT

The Canal Society has recently received two \$5,000 grants to be used for the Mahler House property at 1260 Waterloo Road, within Allamuchy Mountain State Park. This

house is owned by the Division of Parks & Forestry, is located on a nearly 2-acre property, is contiguous with an outstanding section of the Morris Canal and is a key parcel for establish-

ing through trails for the Morris Canal Greenway, the NJ Highlands Trail and the Liberty-Water Gap Trail. The Society is seeking to lease the house from the State. The grants came from the New Jersey Highlands Coalition and Leavens Foundation and are an important recognition of the importance of this project to convert the Mahler House into a trail head/interpretive center for the Morris Canal Greenway and associated trails and for use as a Canal Society headquarters. ■

## CALENDAR OF EVENTS

- |   |   |
|---|---|
| <b>Sunday, September 13 &amp; 14</b>      | <b>South Bound Brook Canal Day</b><br><i>10:00 a.m. – 4:00 P.M.</i>                               |
| <b>Friday, September 19</b><br>7:30 p.m.  | <b>Membership Meeting</b><br><i>Morris County Cultural Center</i>                                 |
| <b>Friday, November 21</b><br>7:30 p.m.   | <b>Membership Meeting</b><br><i>Morris County Cultural Center</i>                                 |
| <b>Sunday, September 28</b>               | <b>Morristown Fall Festival</b>   |
| <b>Saturdays, September &amp; October</b> | <b>Waterloo Canal Heritage Days</b><br><i>September 13 &amp; 20</i><br><i>October 11 &amp; 25</i> |

[www.CanalSocietyNJ.org](http://www.CanalSocietyNJ.org)

[nj-cnal@googlegroups.com](mailto:nj-cnal@googlegroups.com)



The Mahler House

ADDRESS SERVICE REQUESTED

Morristown, New Jersey 07963-0737

PO Box 737

CANAL SOCIETY OF NEW JERSEY

16 SEP 2008 PM 5 L

KEARNY NJ 070

DVD P&DC