

ON THE LEVEL

EVENTS
EDITION

THE CANAL SOCIETY OF NEW JERSEY Poland's Elbląg Canal

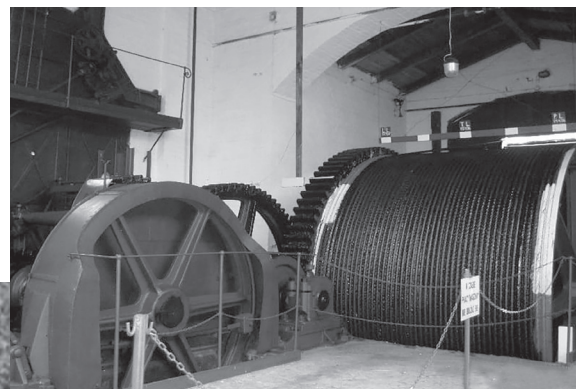
PROGRAM MEETING MAY 17TH

At our May Program Meeting a special guest, Cezary Wawrzynski from the office of the Ostróda Commune, Warmian-Masurian Voivodeship in Poland, will present a program on the Elbląg Canal. This famous canal was built using the same inclined plane technology as our Morris Canal here in New Jersey. Unlike the Morris, however, the Elbląg Canal is still intact. Between 2011 and 2015 it underwent renovation and is now, once again, open for navigation. Although we have seen pictures of these planes before, Cezary will be taking time out of his trip to give us the in-depth story. During the meeting Cezary will meet with members of the Morris County Heritage Commission to exchange resolutions of friendship and support between our two counties.

The Elbląg Canal was designed between 1825 and 1844 by Georg Steenke, as a commission given by the King of Prussia. Construction began in 1844 and the canal opened on the 29 October 1860. The elevation change over a 5.9-mile section of the route was too great for traditional locks. To solve this problem, an ingenious system of inclined planes was developed, based on those used on the Morris Canal. As on the Morris, a few lift locks were used as well. The planes were double tracked so that descending boats helped counter-balance boats being pulled up the plane, similar to the arrangement used on the Morris in the 1830s and 1840s. Elbląg boats could transport 50-ton cargoes. There were originally four inclined planes, with a fifth added later. The canal was called the

Oberländischer Kanal or Upper Land Canal and its location was originally part of the Kingdom of Prussia. In 1945 this area became part of Poland. After wartime damage was repaired, the canal was restored to operation in 1948 and is still in use as a tourist attraction.

To hear the whole story, join us on May 17th at the Morris County Cultural Center. The program will start at 7:30 p.m. In addition, light fare and beverages will be served at 7:00 p.m. Please come early to enjoy food and friendly conversation before the meeting. ■



The machinery and cable winding drum at one of the inclined planes.



Visitors admire the passing scenery as their tour boat ascends one of the Elbląg Canal's inclined plane.

MEMBERS

In order to have a newsletter sent to you in time for the May program meeting and yearly election of CSNJ officers and directors, we are sending you this Events Edition of *On the Level*. Later in the Spring you will receive an extra edition with stories, news, and *Reflections*.

The 2019 Season at Waterloo Village

Once again, the Canal Society is gearing up for another great season at Waterloo Village! To better serve the public, the programming has changed a bit from past seasons.

First off, we will still be holding our annual Canal Day festival, which will take place on Saturday, June 22. This will be similar to past Canal Days, where the Canal Society will be offering building tours, canal boat rides, live music, artisan demonstrations, sales and exhibits. This is the Canal Society's biggest event of the year, and is not to be missed!

For the subsequent Saturdays during the season, Waterloo will be open with programming by both State Parks and the Canal Society of NJ, including building tours, the Canal Museum and Highlands Boat Exhibit, canal tours, and the Lenape Indian village. On certain Saturdays, canal boat rides and artisan demonstrations will also be offered, depending on availability of staff. In order for the public to experience all the weekend programming on the same day, only passive recreation will be available on Sundays. The 2019 season will run until the end of September.



This year Earle Post will be working in the carpenter shop with Steve Lauf and Bill Pegg on items such as the canal boat rudder shown in the picture above.

The Canal Society is in need of volunteers for its Canal Day event, as well as our museum, boat exhibit and canal boat ride on subsequent Saturdays. If you are interested in helping out, please contact Tim Roth at tim-roth@comcast.net. No experience is needed and training will be provided!

NOTICE TO THE MEMBERSHIP

CANAL SOCIETY OF NEW JERSEY

Election of Officers and Board Members

The following candidates are offered for election at the May 17, 2019, Program Meeting of the Canal Society of New Jersey, 7:30 p.m. at the Morris County Cultural Center, 300 Mendham Road, Morris Township:

Candidates for Officers

President – Joe Macasek **Vice President** – Tim Roth

Candidates for Director

Bruce Blondina Judy Keith Bill Pegg
 Bob Bodenstern Bill Meier Rich Richter

MEETINGS

Morris County Cultural Center, 300 Mendham Road, Morris Township

Friday, September 20, 7:30 p.m. Refreshments at 7:00

THE DELAWARE CANAL

COMMERCE, CALAMITIES & CONSERVATION

BY SUSAN TAYLOR

EXECUTIVE DIRECTOR OF THE FRIENDS OF THE DELAWARE CANAL

In this presentation Susan Taylor will give us a visual tour of the 59-mile-long Delaware Canal that runs from Easton to Bristol, PA. The evolution of the Canal from a 19th century commercial corridor to a Pennsylvania State Park will be related. Historic photographs will illustrate stories of the era when teams of mules pulled canal boats laden with tons of coal to Philadelphia and New York.



Lehigh canal boat heading south on the Delaware Canal.

Calamities caused by structural failures and Mother Nature will be described, and the challenges of maintaining and restoring the Canal will be shared.

The Friends of the Delaware Canal is an independent, not-for-profit organization working to restore, preserve, and improve the Delaware Canal and its surroundings. The organization's primary goals are to ensure that the Canal is fully watered from Easton to Bristol and that the towpath trail is usable over its entire length. ■

D&R CANAL

2019 WALKS AND EVENTS

These walks and events are sponsored by the D&R Canal Watch. All Saturday Canal Walks begin at 10 AM, unless noted. Meeting Places are designated with "(MP)" in the walk description. Contact information for Program Leaders is below. If emailing, use "D&R Canal" in subject header.

D&R Canal Watch, www.canalwatch.org D&R Canal State Park, www.dandrcanal.com

Bob Barth, 201-401-3121; bbarth321@aol.com

Pamela V'Combe, 609-635-2783; pjvcombe@gmail.com

Jessica Hunsdon, 732-993-4505

Saturday, May 11 - 10:00 a.m.

6 m Walk - Griggstown to Colonial Park. Meet at parking lot F, 156 Mettlers Road, Somerset, NJ 08873. Many blooms along the trail in May, including a bridgetender's garden, abundant flora trail and the nationally acclaimed Rudolf W. van der Goot Rose Garden. Short walk is 3.5m to Blackwell's Mills. Leader: Pamela V'Combe

Saturday, May 18 - 10:00 a.m.

History Bike Tour on the D&R Canal towpath from Kingston to Griggstown and back, 10 miles round trip. Explore the structures along the D&R Canal with Canal Watch trustee Bob Barth. Meet at the locktender's home in Kingston. Bring water; helmet required. Allow three hours. Leader: Bob Barth

Saturday, May 18 - 5:30 to 8:00 p.m.

Dinner cruise on the canal boat Josiah White II in Easton, Pennsylvania. Join us on the mule-drawn boat and experience "locking through." Canal troubadour Roy Justice will entertain us with songs and stories. This is a fund-raiser to restore the bridgetender's station in East Millstone. \$100 per person. To sign up, visit www.canalwatch.org and on the canal dinner cruise link.

Sunday, May 19 - 10:00 a.m. to 4:00 p.m.

Canal Road will be closed between Butler Road and Amwell Road for Franklin Township's "Walk and Roll." Enjoy a day with friends and family along the scenic D&R Canal with no cars!

Saturday, June 8 - 10:00 a.m.

5.8 m Walk - East Millstone to Lock 11 in South Bound Brook (MP), across from the post office on Canal Road at Madison Street. Short walk is 2.7 m to Zarephath. East Millstone may be small today, but it was once a booming factory and transportation hub. Leader: Pamela V'Combe

Tuesday, June 24 - 9:30 a.m.

East Millstone Canal Towpath to Colonial Park Loop. 2.0 - 2.5 miles. Meet at the East Millstone trailhead (Route 514) where we will visit the historic Bridgetender's House and hear about the village's history. Then, we depart for a short leisurely walk to Somerset County's Colonial Park. After exploring the park's numerous gardens and arboretum, we will return to our cars. Leader: Pamela V'Combe

Sunday, July 14 - 10:00 a.m. to 4:00 p.m.

Canal Walk and Roll: Canal Road will be closed from Route 518 to the Griggstown Causeway. Enjoy a day with friends and family along the scenic D&R Canal with no cars!

Tuesday, July 23 - 9:30 a.m.

Bulls Island and Raven Rock via the White Oak Trail Loop. 2.0 - 2.5 miles. Meet at the D&R Canal State Park's Bulls Island Visitor Center on Route 29, where D&R Canal history and nature displays can be viewed. After hearing the history of Bulls Island and the local area, we will depart for the White Oak Trail and see the hamlet's namesake, Raven Rock. Leader: Pamela V'Combe

(Continued on page 4)

Warren County PARKFEST

Saturday, June 8th

Warren County Parks Foundation

11:00 a.m. to 5:00 p.m.

ParkFest has something for everyone: Live music, food vendors, classic cars, and book signings by local authors. The museum will be open for visitors and there will be tours of the park's full-size canal boat replica. More information call 908-475-6539 or email morriscanal@co.warren.nj.us

Bread Lock Park

2627 Rt. 57

Stewartsville, NJ 08886

WATERLOO

SAVE THE DATE

Waterloo Canal Day Festival

Saturday, June 22, 2018

10 a.m. - 4 p.m.

INDUSTRIAL HERITAGE WALKS

May through August

May 11th

Waterloo Valley Trail

Morris Canal Towpath

June 1st

Stanhope

Canal & Iron Town

July 20th

Raritan Power Canal

Water Power & Bridges

August 11th

Incline Plane 2 East

Morris Canal

Industrial Heritage Walks are sponsored by the Morris County Park Commission.

For information and reservations, please email macgraphics2@gmail.com or call 973-292-2755.

D&R WALKS AND EVENTS

(Continued on page 3)

Saturday, August 10 - 10:00 a.m.

6.2 m Walk- Washington Crossing to Ellarslie, the Trenton City Museum in Cadwalader Park (MP). We will pass by old quarries near Wilburtha and Upper Ferry Roads, several historic canal structures, stop gates, a spillway, an aqueduct, and other historic features.

Short walk is 3.6-mile walk to Scudder's Falls. Leader: Pamela V'Combe.

Sunday, August 11

Canal Walk and Roll: Canal Road will be closed from 10:00 to 4:00 from Route 518 to the Griggstown Causeway. Enjoy a day with friends and family along the scenic D&R Canal with no cars!

CALENDAR OF EVENTS

Friday, May 17

Program Meeting

Cezary Wawrzynski, Poland's Elbląg Canal
Morris County Cultural Center, 7:30 p.m.

Sunday, June 2

Waterloo Volunteer Appreciation & Orientation Luncheon

Waterloo Village, Noon to 2:00 PM

Saturday, June 8

Warren County ParkFest

Bread Lock Park, 11:00 AM to 5:00 PM

Saturday, June 22

Waterloo Canal Day

Waterloo Village, 10:00 AM to 4:00 PM

Saturday, August 24

Wharton Canal Day

Hugh Force Park, Wharton 10:00 AM to 4:00 PM

www.CanalSocietyNJ.org

50th ANNIVERSARY Canal Society of New Jersey

1969 - 2019

Join us this year in celebrating the Canal Society of New Jersey's 50th Anniversary. There will be special activities throughout the year. Watch for e-mails with information about anniversary programs and events.

Tuesday, August 20. 9:30 a.m.

3 m Walk- Blackwells Mills Bridge Tenders Garden & Six Mile Run Trail. Meet at the Blackwells Mills Day Use Area parking lot (on the causeway). En route to the Six Mile Run Trails area, we will visit the Blackwell Mills bridgetender's house and garden, and then head toward the Six Mile Run trail. Lunch: Bring a picnic lunch. Leader: Pamela V'Combe.



ADDRESS SERVICE REQUESTED

PO Box 737
Morristown, New Jersey 07963-0737

CANAL SOCIETY OF NEW JERSEY

FIRST CLASS MAIL